


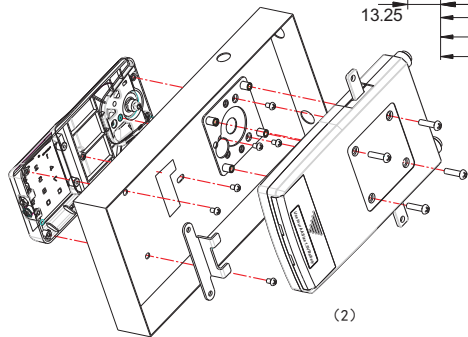
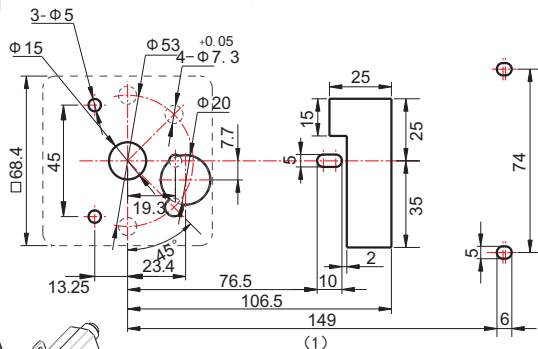
8.Common problems & solutions

Problems	Primary cause	Solution
After code input, "di di di" sound alarm, lock not able to open	Wrong code	Refer 7
Correct code input, "di di di" sound alarm, and  is on, lock not able to open	Low voltage	Replace batteries
No sound when operating keypad. lock is ok to open	Buzzer broken	Replace buzzer

9.Installation instruction

► Fixing hole size

Unit:mm



◀ Installation step, see figure 2

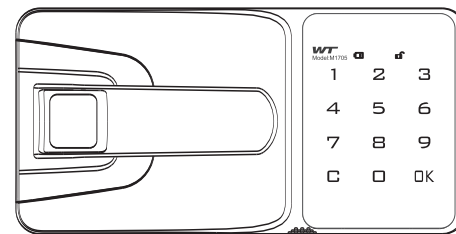
Before installation, please make sure the handle and lock body are at unlock position, (lock pin and cam contracted, factory default)
For metal furniture, suitable thickness: 1mm

Add : Guanhaiwei Industrial Zone West Section,Cixi,Zhejiang,China
Tel : 0574-63631987 Fax: 0574-63630233
http : //www.wang-tong.com



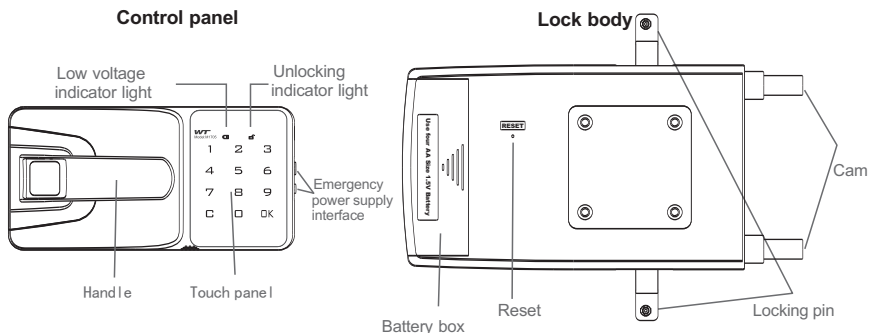
Work Manual

M-1705



NINGBO WANGTONG LOCKS CO.,LTD.

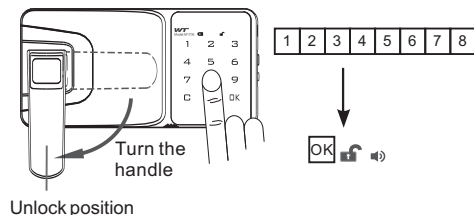
Product Instruction



How to operate

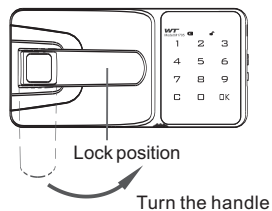
1.Unlock

Input factory default code "12345678+ OK", Buzzer gives out a long di... sound, The unlocking indicator light is on, turn the handle 90° clockwise to open the lock



2.Lock

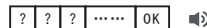
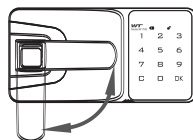
Rotate back the handle 90° to lock position



3.How to set code

- Code can be consisted of 8-15 digits, last code will not be lost after changing the battery.
- **Change user code:**
 - ① Input factory default user code 12345678 + C
 - ② Input new user code + OK + new user code + OK
 Buzzer gives out a long di sound means user code already been changed

4.Auto-alarm

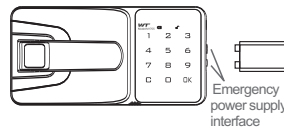


Auto-alarm will be activated if wrong code be input 4 times or violent destruct or improper move , the lock will be died for 60 seconds. Inputting correct code will release the alarm.

5.Automatic power shortage prompts

When the voltage is very low, buzzer gives out a di di di sound when unlock and Low voltage indicator light is on, please replace the battery

6.Emergency power supply



- When the lock can't be opened due to the low voltage, pls connect a 9V battery to the Emergency power supply interface on the control panel to open the lock.
- It is for emergency, after open the door, please equipped with 4pcs AAA

7.Decode

When code been forgotten, you can get the decode number by providing the code on the lock body to the distributor to decode. the lock will be changed back to defaults
management code: 87654321 user code: 12345678