

PowerADC

USB-C Rechargeable Camera
Battery System

LP-E6NH / NP-FZ100 / NP-W235

www.theodist.com



High Power When You Need It!

Using high-current charging (5V 2.2A), the battery can be fully charged within 2.5 hours.*

PowerADC

This product system has passed the rechargeable battery certification for safety and efficiency:
FCC/UL/UKCA/CE/RoHS/ISED

* Data source: SmallRig Electric Laboratory

2400mAh

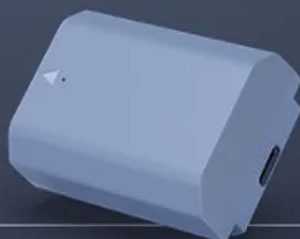
High Capacity

Meets the needs of
long-time recording/shooting
(based on CIPA Standard testing)



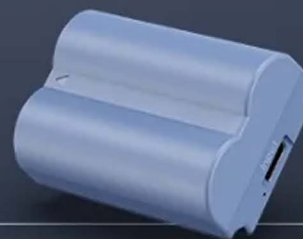
LP-E6NH

Recording Time	3H
Number of Shots	780
Test Camera Model	Canon EOS R7



NP-FZ100

Recording Time	3.8H
Number of Shots	680
Test Camera Model	Sony Alpha 7C



NP-W235

Recording Time	1.5H
Number of Shots	336
Test Camera Model	FUJIFILM X-T4

* Tested in strict accordance with CIPA standards: Test temperature 25°C/77°F; Test humidity 50%

CIPA is a standard developed by the Camera & Imaging Products Association of Japan to test the battery life of cameras. The standard specifies clear test procedures and specifications that can ensure the accuracy of test results, provide users with more objective comparisons and more accurate evaluations, and is recognized as an authoritative standard for camera manufacturers and consumers

Only 1 Cable Needed

The battery system comes with a USB-C charging interface for use with a variety of power supplies, only one-cable is needed for charging anytime, anywhere! No need to worry about battery life



* Also supports charging with a dedicated charger



Comparable to the Original in All Ways

Built-in decoding chip for full compatibility with the camera (no pop-up warning during using), and supports power display

The distinctive ABS+PC shell with frosted surface treatment is fire-resistant, durable and perfectly fits the battery compartment

Multilevel Protection For Maximum Safety



Short Circuit
Protection



High Temperature
Protection



High Current
Protection



High Voltage
Protection



Over-charge
Protection



Over-discharge
Protection



LP-E6NH USB-C Rechargeable Camera Battery

ID 4264

LP-E6NH USB-C Rechargeable Camera Battery × 1
0.6m/1.97ft USB-A to USB-C Charging Cable × 1
Battery Cover × 1
User Manual × 1



Compatible Models

Canon EOS 5D Mark II / 5D Mark III / 5D Mark IV / 6D / 6D Mark II / 7D / 7D Mark II / 60D / 60Da / 70D / 80D / 90D / XC10 / XC15 / 5DS / 5DSR / R / R5 / R6 / R5C / R7 / R6 Mark II

Battery Type:	Lithium-ion Battery	Cell Nominal Capacity:	2400mAh	Operating Temperature:	0°C~45°C
Battery Specifications:	2400mAh 7.2V 17.28Wh	Charging:	5V/Maximum 2.2A	Battery Weight:	83 ± 5g
Input Voltage:	8.4V	Maximum Output Current:	5A	Battery Housing Material:	PC+ABS
Nominal Voltage:	7.2V	Over-discharge Protection Range :	4.5~7.5A		
Battery Cell Specifications:	NCR18500A240A*2 / YL	Cut-off Voltage:	5.0V		

Battery Type:	Lithium-ion Battery	Cell Nominal Capacity:	2400mAh	Operating Temperature:	0°C~45°C
Battery Specifications:	2400mAh 7.2V 17.28Wh	Charging:	5V/Maximum 2.2A	Battery Weight:	81 ± 5g
Input Voltage:	8.4V	Maximum Output Current:	5A	Battery Housing Material:	PC+ABS
Nominal Voltage:	7.2V	Over-discharge Protection Range :	4.5~7.5A		
Battery Cell Specifications:	NCR18500A240A*2 / YL	Cut-off Voltage:	5.0V		

NP-W235 USB-C

Rechargeable Camera Battery

ID 4266

NP-W235 USB-C Rechargeable Camera Battery × 1
0.6m/1.97ft USB-A to USB-C Charging Cable × 1
Battery Cover × 1
User Manual × 1



www.theodist.com

Compatible Models

FUJIFILM XT-4 / GFX-100S / GFX50SII / X-H2S /
X-H2 / X-T5 / XS20

Battery Type:	Lithium-ion Battery	Cell Nominal Capacity:	2400mAh	Operating Temperature:	0°C~45°C
Battery Specifications:	2400mAh 7.2V 17.28Wh	Charging:	5V/Maximum 2.2A	Battery Weight:	83 ± 5g
Input Voltage:	8.4V	Maximum Output Current:	5A	Battery Housing Material:	PC+ABS
Nominal Voltage:	7.2V	Over-discharge Protection Range :	4.5~7.5A		
Battery Cell Specifications:	NCR18500A240A*2 / YL	Cut-off Voltage:	5.0V		